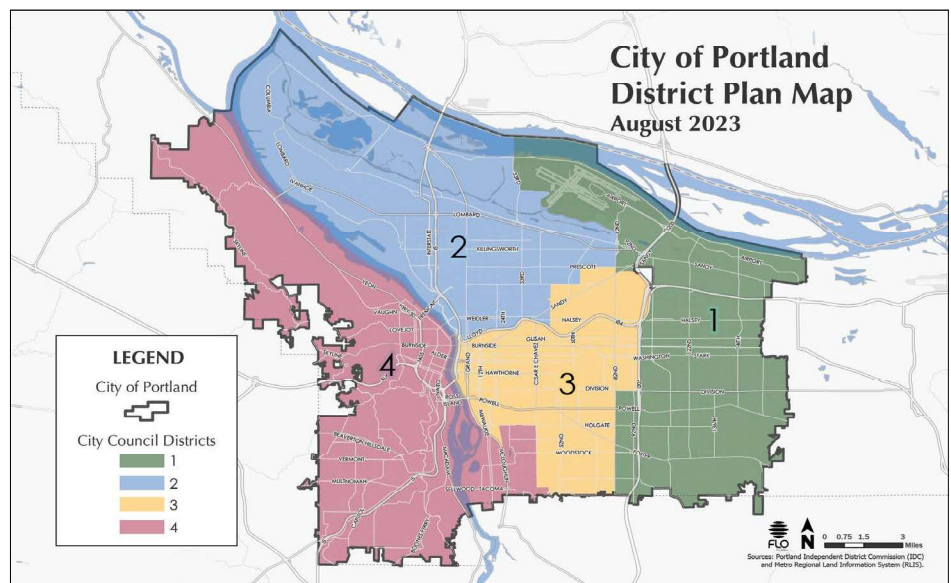


Eastmoreland Sliced Out of Eastside Council District

WHEN IT COMES to electing members of next year’s city council, Eastmorelanders will find themselves in an unusual position: our votes will be lumped together with a new district representing Portland’s entire west side.

The ENA Board of Directors had strongly opposed this idea, arguing that Eastmoreland should be part of a proposed Southeast district. After all, Eastmorelanders have more in common with our neighbors in Woodstock and other eastside communities than with neighborhoods on the west side of the river.



Each of the above four districts will elect three city council members next year.

The independent commission appointed by Portland Mayor Ted Wheeler disagreed. The commission wanted to keep the entire area west of the Willamette in one district, but there was a problem with that goal: each of the four new districts needed an equal population, and the population west of the Willamette fell short of the required 165,000 people. To “top up” the proposed West district, the commission needed to add about 23,000 residents. It found those residents in the neighborhoods of

Eastmoreland, Sellwood-Moreland and Reed.

The creation of the four districts was mandated under a ballot measure approved by voters last year. The measure ended the practice of electing four city commissioners at-large. Instead, 12 council members will be elected, with voters in each of the four new districts picking three members to represent them. The mayor and auditor will still be elected on a city-wide basis using a ranked-choice voting system.

The ballot measure made other major changes: city council members will no longer be assigned to direct the day-to-day operations of city departments, and a new “single transferable vote” method will be used to elect city council seats, while a ranked choice voting system will be used to elect the mayor and auditor.

Under the new system, voters can make up to six selections for city councilor positions, ranking their choices in

Continued on Page 2

INSIDE	Page 2	President’s Message
	Page 3	Clean Up Event Scheduled
	Page 3	The Great ShakeOut
	Page 5	Tree Planting Time
	Page 6	Legacy Bricks Replaced
	Page 7	Around the Neighborhood

WHO WE ARE

Editor: David Lytle
newsletter@eastmorelandPDX.org

2022/2023 Board of Directors

Matthew Timberlake, President

Joel Fowlks, Vice President

Dinah Adkins, Secretary

David Dowell, Treasurer

John Alkire

Todd Bauman

Lucas Bengtson

Nianna Bray

Kristin Brooksby

Joe Dudman

Michael Hilberg

Steve Kilduff

Kelly Lanspa

Matthew Lynn

Andy Payne

Mick Seidl

David Seitz

Nico Smith

Rob Walton

Tuck Wilson

Ben Wright

ENA is a nonprofit organization run by volunteers. Members of the board are elected by the residents of Eastmoreland.

communications@eastmorelandpdx.org

www.eastmorelandpdx.org

PO Box 82520

Portland, OR 97282

President's Message

Matthew Timberlake, ENA President

THE BIG NEWS this summer was the selection by the Portland Independent District Commission (IDC) of the first ever district map boundaries for Portland. The IDC created four geographic voting districts for the election of city councilors starting in November 2024. The Eastmoreland, Sellwood-Moreland, and Reed neighborhoods were joined with all of Portland west of the Willamette River to create the new District 4 (*see story, page 1*).

The ENA Board and many of our neighbors were opposed to this map. Eastmoreland is very much a part of the inner Southeast, and proud to be so. We share common concerns about the environment, our inner SE mixed residential/industrial areas, the railroad main line that cuts through our neighborhoods, protection of the tree canopy, and our public spaces.

Members of the ENA joined many of our neighbors in attending public meetings with the IDC. We also hosted an ENA Speaker Series event with two of the IDC Commissioners. We lobbied hard for the "Maple" map (which kept Eastmoreland in the Southeast district). But in the end, the IDC unanimously chose a different map. This will govern our elections until the next census.

I spoke with several of the commissioners, and they laid out cogent reasons why they believe the current map will not disenfranchise our neighborhoods. Whatever the outcome, one thing is certain: with nine councilors from the east side, it will greatly increase the representation of East Portland, and thus will be more equitable.

As we move forward to the first election next year, it will be more important than ever that we make our voices heard. Eastmoreland, Sellwood-Moreland, and Reed constitute a little less than 14% of the new District 4. We will want to make sure that the three councilors who are elected to the district represent our neighborhoods along with the west side.

There's more information on the new districts and the election process at the City of Portland's website: www.portland.gov/transition. ENA plans to host informative talks in our Speaker Series. We always welcome your ideas; please email communications@eastmorelandpdx.org, or reach out to me directly at president@eastmorelandpdx.org.

Thank you for all you do to make Portland, especially Eastmoreland, the wonderful place we call home. All the best to you and yours for a wonderful fall.

Matthew Timberlake

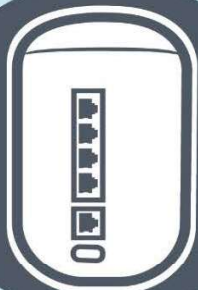
Districts *Continued from Page 1*

order of preference. Any candidate with more than 25% of the vote in the first round is declared a winner. If a candidate gets more than 25%, the "surplus" votes are transferred to each voter's next-ranked choice. If there is no winner in a round of voting, the candidate with the fewest votes is eliminated and their votes are moved to each ballot's next highest-ranked choice.

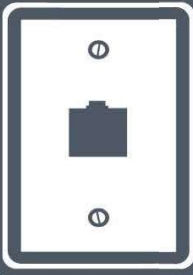
The election of the new city council members, mayor and auditor take place on Nov. 5, 2024. There will be no primary elections.

WIFI STRUGGLES?

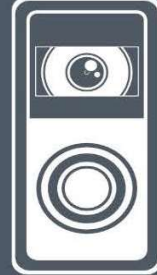
- NETWORKING PROFESSIONALS READY TO HELP.
 - CONSULTATION AND INSTALLATION.
- WIFI OPTIMIZATION: ELIMINATE DEAD ZONES!
 - NETWORKING HARDWARE.
- NETWORK DROPS / WALL PORTS.
 - SECURITY AND AUTOMATION.



MODEMS AND ROUTERS



WALL PORTS



SMART DEVICES

WWW.NETWORKSPDX.COM

971.915.4420

NETWORKS
PDX

Fred Shearer & Sons

Is your home ready for an upgrade?



We are here to help - Specializing in:

Traditional Interior Plaster
Venetian and Ornamental Plaster
Lathing - Stucco - EIFS - Drywall



FRED SHEARER & SONS, INC.

ESTABLISHED 1916

CCB# 357

503-520-9991
fredshearer.com

Portland's Longest Operating Wall & Ceiling Contractor



SCAN ME



LOCAL 82

Fall Tree Planting Season is Here

Why plant a new street tree in front of your home? Because the Eastmoreland tree canopy is rapidly shrinking! Long-time residents of Eastmoreland know that the leafy canopy created by our big street trees cannot be taken for granted. Each year, the neighborhood loses about 25 large-form trees (over two feet in diameter) because of age, disease and weather-related causes. Street trees are not only beautiful, but they can also significantly reduce summer-time temperatures.

An ENA program, 100 Trees for 100 years, aims to slow the loss of our tree canopy by helping residents plan, select and pay for new street trees. The program aims to ensure the establishment of large-form trees in the right places. The neighborhood has over 300 spaces that meet eligibility criteria for large trees. We would like to fill as many of these spaces as possible as quickly as possible. And the time to order trees for winter planting is now.

Homeowners will be fully or partially reimbursed by ENA when they plant an approved large-form tree in a parking strip that meets these simple criteria: it is wider than six-feet from curb to sidewalk and free of overhead high-voltage wires (in some cases, the location of driveways, traffic signs and meter boxes can affect eligibility).

To get started, contact the ENA Tree Committee (see below), which can guide you through the process of selecting a city-approved tree and applying for a tree-planting permit from the city. The permitting process often takes several weeks, so requests for permits should be made as early as possible for late-fall planting.

Once your tree selection and permit have been finalized, ENA's Tree Committee will place an order in the fall with a local wholesale nursery. In late fall or winter, the nursery crew will come to Eastmoreland to plant, mulch, and stake the ordered trees. These trees will have a diameter of about 2.5". The cost of the tree plus planting, mulching, and staking has averaged about \$400/tree. The cost of the tree will be fully or partially covered by the 100 Trees for 100 Years campaign.

If your home's parking strip doesn't meet the criteria for a large-form tree, you probably can plant a smaller tree that will still contribute to making the neighborhood more livable. We estimate that there are about 400 parking strips in the neighborhood that can support small trees. And, you can always plant large or small trees in your home's yard.

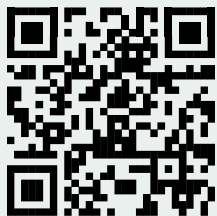
FOR MORE INFORMATION:

- Contact the ENA Tree Committee at eastmoreland.tree@gmail.com
- Visit the Tree Committee web page at eastmorelandpdx.org/committees-taskforces/trees



Save our tree canopy. Contact ENA for help planting a street tree.

CONNECT WITH ENA!



Join us on Facebook
Get E-News
Scan the QR code

KIM'S TAEKWON-DO

FALL SPECIALS!

— Family Rates Available —

*Traditional Non-Contact Korean Martial Arts
with classes for men, women & children!*

8113 SE 13th (Sellwood)
503-708-9083
cynthia.brown@comcast.net www.KimsTKDportland.com

230712.0308 B&C

DEDICATED TO: PROGRESS • PEACE • LOVE

"Come get your kicks with us!"

Legacy Bricks Replaced

The Eastmoreland Garden is adorned with hundreds of bricks bearing the names of generous donors. But the weather has not been kind to the original concrete blocks purchased in 2001. ENA is replacing these “Legacy” bricks with more robust bricks at no charge. We are replacing 50 bricks per year. Below is a list of the 100 bricks replaced to date, with multiple purchases shown in parentheses. Another 159 bricks will be replaced in the future.

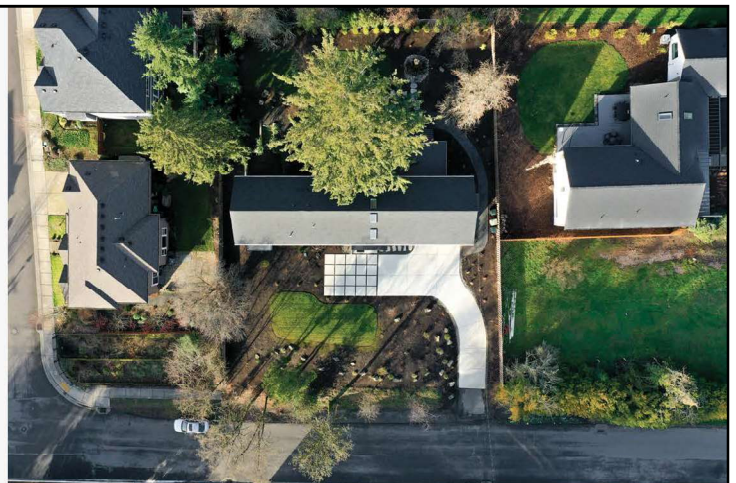
New Memorial Bricks may be purchased on the ENA website for \$135 each. All funds go to the care of Eastmoreland Garden. Visit eastmorelandpdx.org and click on the ENA Store.

A: Michael and Michelle Alberts; James and Ruth Alexander (4) John and Melanie Alkire; S. Arch (4); Genevieve and Corey Athens **B:** John and Lisa Barger; Todd Baumann; Victoria Wilder Benson; Dan Bracken (2); Rebecca Brandt; Leslie Breaux; Victor and Joanne Breen; Cecelia Brown; Lynn Burns; R.E. Butler **C:** Diane Carlsen; Jody Cavanagh; Eleanor Chick; Tom Christ and Mary Kyle McCurdy; Susan and Rick Collins; Barbara

Hood Conner (3); Pam and Damian Conrad; William Courogen; Grant and JoAnn Culver **D:** Margaret Delacy; Jon Dickinson and Marlene Burns; Doris DiNucci; John A. Dudman; Edward and Josette Dundon **E:** Helen and William Evans **F:** John and Ellen Fitchen **G:** Tasha Galbraith; Rob and Linda Gaudin; Gary and Karen Genzer; Molly Gilchrist; Lisa Girard; Dorothy Danna and Kathy Griffith; Dave and Marianne Gunderson; Richard and Joyce Gustafson; Frank and Marjorie Gwilliam **H:** Tom Hansen; Karl and Lauri Hausafus; Sharon Haynes (2); Tom Hendrickson; David Holt; John and Susan Hoover **J:** Tal and Patti Johnson; Karl Lee and Roberta Jortner; George and Elizabeth Joseph **K:** Scott and Toni Karter; Caryn and Jeff Keeney; Duniway School/Kam Kimball; Melinda King (2); Klutho Family; Robert Krueger **L:** Paul and Dorothy Lambertsen; Earl and Lorraine Livesay; Don Lloyd; George and Diane Lozovoy **M:** Debbie and David Menashe; Mike and Peggy Merchant; Molly Morgan; The Moscoe-Webb Family; Charlotte Mullen; Greg Muller **N:** Newton Enterprises (2) **S:** The Skogrand and Lamirande Family

CALL OR TEXT

KENNETH AVERY
971.506.9970



REALTOR + CONCIERGE SERVICE

Complimentary Home Staging • Professional Photos
Professional Videography • 3D Tour Generation • 2D Floor
Plans • Arranging & Meeting Contractors • Painting
Refinishing Flooring • Landscaping • Much More!



Around the Neighborhood

Earthquake Drill in October

PLEASE JOIN US in participating in the first ever Great Eastmoreland ShakeOut on Oct. 19. We'll be part of the Great Oregon ShakeOut, the state's largest earthquake drill event and a similar national event, the Great American Shakeout.

Because a major earthquake could happen at any time, the ShakeOut is a chance to practice how to protect ourselves and to be better prepared. ENA's Emergency Preparedness Committee is proposing this event for our neighborhood, and we want to hear from neighbors about this local version of the state and nationwide event.

The Great Oregon ShakeOut website, www.shakeout.org/oregon, has materials for businesses, schools, families and neighborhoods on how to prepare, survive, and respond to earthquakes. Groups are encouraged to use the ShakeOut has an opportunity to review and practice safety drills. Another important aspect is communication. Cell phone and radio towers may be out of commission after an earthquake. If you are in the ham radio community, your radio could be of valuable help.

Email us at ready@eastmoreland.org with questions and suggestions – we want your help to make this as fun, inclusive and effective as possible.

Welcome New Neighbors

IF YOU ARE NEW to the neighborhood, the ENA Welcoming Committee is eager to introduce you to Eastmoreland. Each new neighbor receives two booklets: a pictorial history of Eastmoreland and a Resource Book outlining information on neighborhood resources (schools, parks, the ENA Board, etc). The Welcoming Committee has delivered these booklets to 85 new neighbors since June of 2022.

If you are new to Eastmoreland since then and have not received a packet, please contact the committee at: info@eastmorelandpdx.org.

All residents are encouraged to get involved with the neighborhood association by visiting the website at eastmorelandpdx.org. Signing up to get the Eastmoreland news via email is great way to stay informed. To get the emails, visit eastmorelandpdx.org/contact-us.

The website also has links to the ENA store where you can buy items that benefit neighborhood projects. Welcome again to our newest neighbors, and we hope to meet you soon.

Bus Service Decreases for Eastmoreland

TRIMET has made major changes to the bus route that services the Eastmoreland neighborhood. As of Aug. 27, the Line 19 bus route though Eastmoreland along SE Rex and SE 32nd Ave. was discontinued.

The Line 19 bus will instead make several stops along SE Woodstock and SE 28th before resuming the usual route over the

Bybee Bridge. The stops along Woodstock and 28th will be the only opportunities for Eastmorelanders to catch the Line 19 bus. And instead of crossing the Ross Island Bridge, the 19 bus will use the Tillikum Crossing. The frequency of the route has also been increased, with buses arriving every 30 minutes during more hours of the day. Details at: trimet.org/betterbus/servicechanges-fy24fall.htm

Duniway Elementary Reunion

GRADUATES OF DUNIWAY Elementary School are invited to attend the all-class reunion and benefit on Saturday, Sept. 23rd. School tours by Principal Rafferty are from 12 to 2 pm with food, cake, music, and old friends in the cafeteria from 12 to 3:30 pm. The benefit is for a new play structure for the current students.

Tickets are \$50 for all alumni and staff and include family members in the price of the ticket. Volunteers for set up, clean up, or help in promoting the reunion are appreciated. For those unable to attend who would still like to donate, please contact duniwayreunion@gmail.com.

Tickets can be purchased at: www.tickettomato.com/event/8080/duniway-elementary-reunion-amp-benefit





NONPROFIT ORG
U.S. POSTAGE
PAID
PORTLAND OR
PERMIT NO. 11

Eastmoreland Neighborhood Association
PO Box 82520
Portland, OR 97282



Landscape Design, Installation, & Maintenance



(503) 698-3732

www.mcquiggins.com

LCB LICENSE # 7235